



# CT1 TIMER — 12V OR 24V DC

## NT-CT1 SERIES 3

### GENERAL PURPOSE TIMER

#### FEATURES

12-24 volt D.C. operation.

- 4 Timing Ranges: - 1 to 255 seconds in 1 second increments.
- 10 to 2550 seconds (42½ minutes) in 10 second increments.
  - 1 to 255 minutes (4 hours, 15 minutes) in 1 minute increments.
  - 1 to 255 hours (10 days, 15 hours) in 1 hour increments.

Accurate DIP switch selection (no pots).

Selectable Positive, Negative or Dual Edge trigger.

13 operating modes:- Single shot.

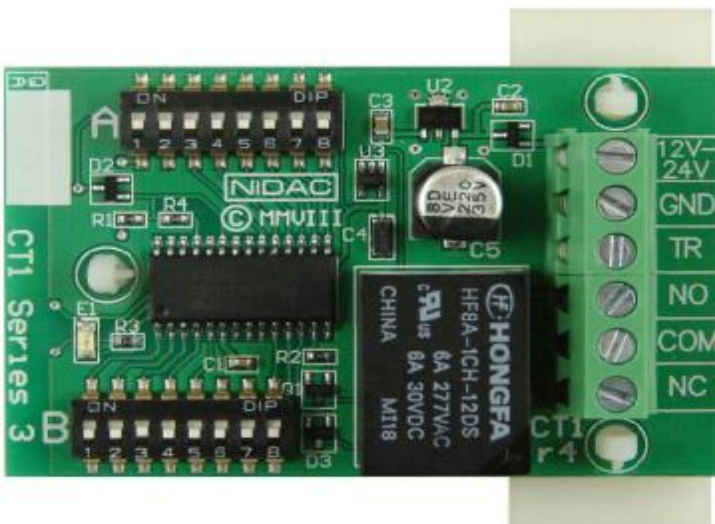
- Single shot retriggerable.
- Dual edge triggered single shot.
- Dual edge triggered single shot retriggerable.
- Bistable (clutch / toggle) operation.
- Trigger Extension.
- Maximum Pulse.
- Minimum Pulse (retriggerable).
- Hold off (Door open too long).
- Multi vibrator (strobe) with 1 second on time, selectable off time.
- Multi vibrator (strobe) with equal on/off times.
- Delay on.
- Delay on retriggerable (no activity timer).

Heavy duty 5 amp. change over relay.

Fail Safe or Fail Secure relay operation.

LED indication of relay operation.

36 month manufacturer's warranty.



#### SPECIFICATIONS

Size:

45mm x 70mm x19.5mm  
(without feet)  
57mm x 70mm x23.5mm  
(with feet)

Operating Voltage: 10.5 - 28 Volts D.C.

Quiescent Current: 10 mA. @ 12 Volts D.C.  
(40 mA. with relay on).  
11 mA. @ 24 Volts D.C.  
(45 mA. with relay on).

High Trigger Voltage: > 2 Volts D.C.

Low Trigger Voltage: < 1.5 Volts D.C.

Trigger Current: -0.03 mA. @ 0 Volts D.C.

0.9 mA. @ 12 Volts D.C.

2.1 mA. @ 24 Volts D.C.

Relay

Maximum Switching

Current: 5 Amps.

Maximum Switching Voltage: 30 VDC, 125 VAC.



### Nidac Security

2 Cromwell Street  
BURWOOD VICTORIA  
AUSTRALIA 3125

Phone: + 61 3 9808 6244

Fax: + 61 3 9808 9335

E-mail: [sales@nidac.com](mailto:sales@nidac.com)

Distributor By: